



BINGHATTI
SKYHALL

FLOOR PLAN BROCHURE





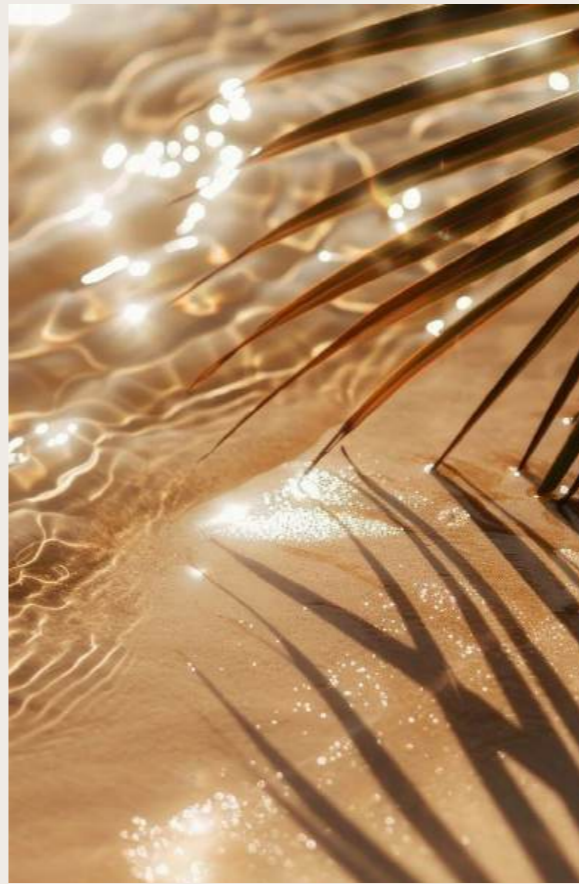
A Haven Above the Horizon

Skyhall offers a sanctuary amidst the city's vibrant energy. Each residence is a haven of tranquility, designed to inspire and rejuvenate.

Sculpted by Light, Defined by Vision

Skyhall's striking silhouette graces the Dubai skyline with its curvilinear form and captivating interplay of light and shadow. A beacon of bold design, it invites you to step inside and discover a world of infinite potential.





For Those Who Seek More



Skyhall is an invitation to those who dare to live above the horizon, within a vision of their own making. It's a place where ambition finds its address, and the future unfolds with every breathtaking sunrise.



Discover a range of thoughtfully designed floor plans to suit your individual needs and lifestyle. From studios to one-bedroom apartments, Skyhall offers a space for every discerning individual.

Floor Plans

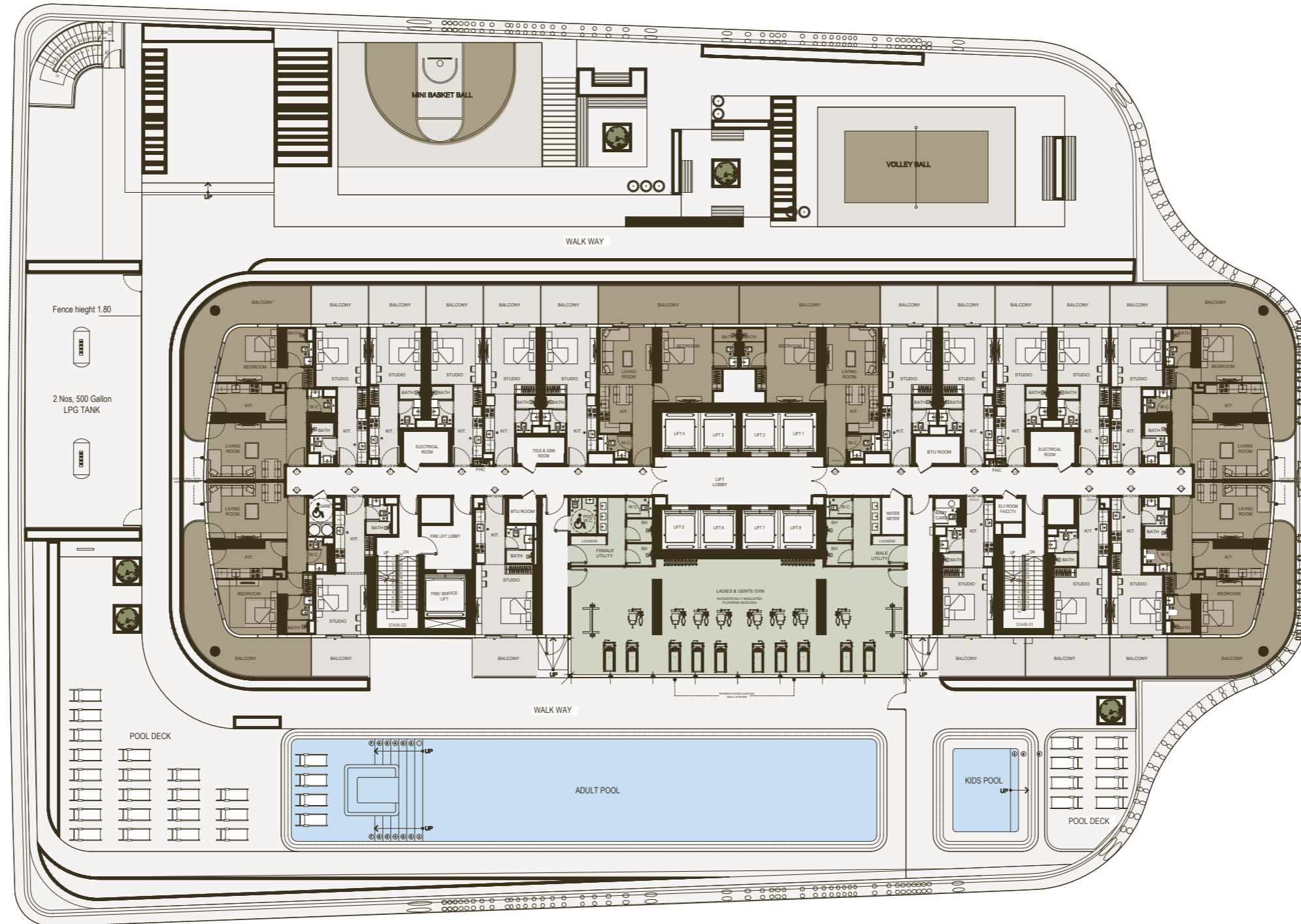




Where Vision Becomes Reality

Step into residences that redefine the living you aspire to. Expansive windows frame breathtaking views of the Dubai skyline, while meticulously curated interiors offer a sanctuary of refined elegance.

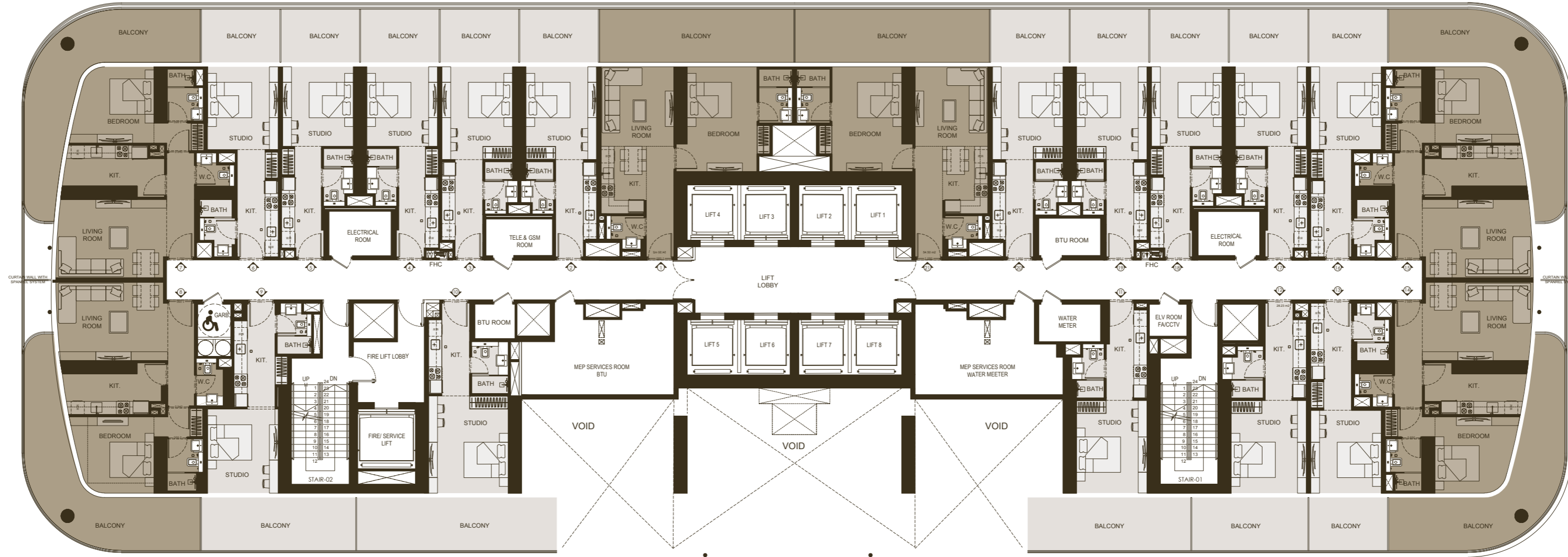
1ST FLOOR TYPICAL FLOOR PLAN



Disclaimer: 1. All stated dimensions and services whether in relation to the building, common areas or individual units are subject to government and local authority approvals. Final dimensions and services will be stated in your sales and purchase agreement 2. All room dimensions are measured to structural elements and exclude wall finishes and construction tolerances. 3. All dimensions have been provided by our consultant architects. 4. All materials, dimensions and drawings are approximate. Information is subject to change without notice. 5. Actual suite area may vary from the stated area. Drawings are not to scale. The Developer reserves the right to make any revisions whatsoever including for aesthetic purposes.

6. Calculation of suite area is measured as the area bounded by the centre line of demising or partition walls separating one unit from another unit, the exterior face of all exterior walls, and the exterior face of the corridor wall enclosing the adjoining unit. 7. Calculation of balcony area is measured as the area bounded by the centre line of demising or partition walls separating one unit from another unit, the outmost face of the enclosing guard and the external face of the adjoining balcony. 8. The units are measured at typical floor in the building. Columns may vary in size depending on the floor level. 9. For each unit type, unit sizes and details might be different and your sales and purchase agreement will contain the actual size of each specific unit.

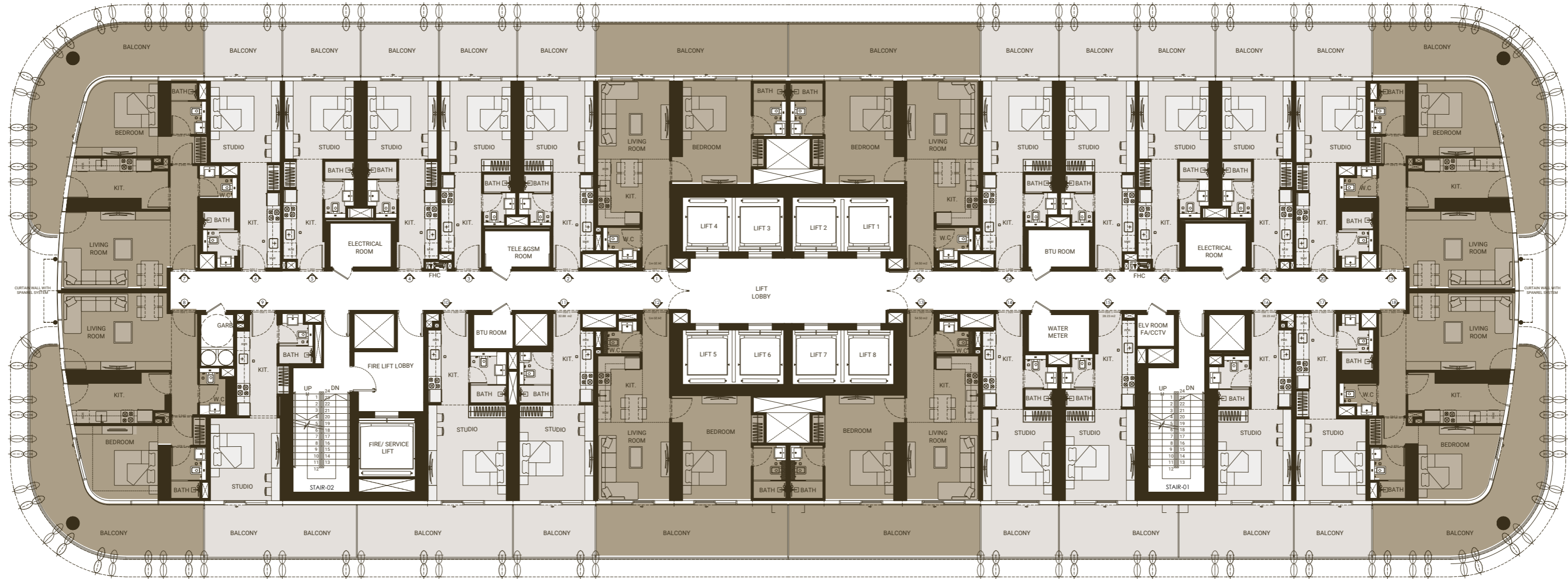
2ND FLOOR TYPICAL FLOOR PLAN



Disclaimer: 1. All stated dimensions and services whether in relation to the building, common areas or individual units are subject to government and local authority approvals. Final dimensions and services will be stated in your sales and purchase agreement 2. All room dimensions are measured to structural elements and exclude wall finishes and construction tolerances. 3. All dimensions have been provided by our consultant architects. 4. All materials, dimensions and drawings are approximate. Information is subject to change without notice. 5. Actual suite area may vary from the stated area. Drawings are not to scale. The Developer reserves the right to make any revisions whatsoever including for aesthetic purposes.

6. Calculation of suite area is measured as the area bounded by the centre line of demising or partition walls separating one unit from another unit, the exterior face of all exterior walls, and the exterior face of the corridor wall enclosing the adjoining unit. 7. Calculation of balcony area is measured as the area bounded by the centre line of demising or partition walls separating one unit from another unit, the outmost face of the enclosing guard and the external face of the adjoining balcony. 8. The units are measured at typical floor in the building. Columns may vary in size depending on the floor level. 9. For each unit type, unit sizes and details might be different and your sales and purchase agreement will contain the actual size of each specific unit.

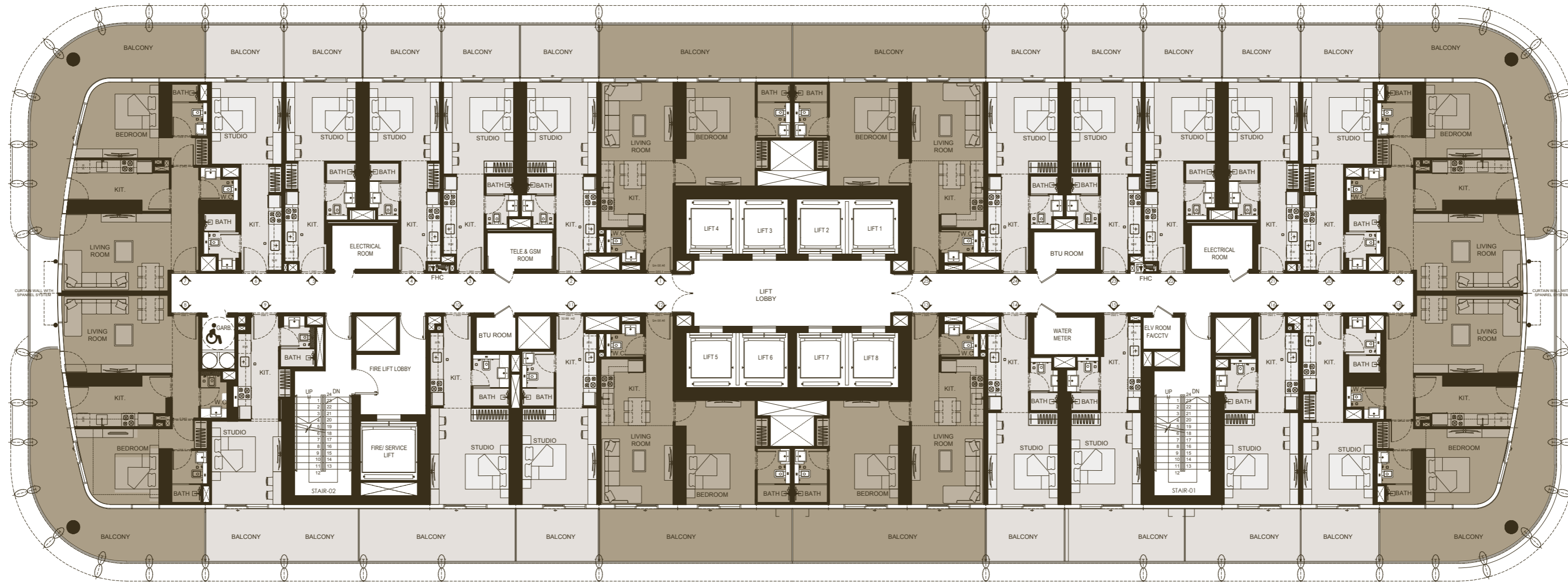
3RD - 29TH FLOOR TYPICAL FLOOR PLAN



Disclaimer: 1. All stated dimensions and services whether in relation to the building, common areas or individual units are subject to government and local authority approvals. Final dimensions and services will be stated in your sales and purchase agreement. 2. All room dimensions are measured to structural elements and exclude wall finishes and construction tolerances. 3. All dimensions have been provided by our consultant architects. 4. All materials, dimensions and drawings are approximate. Information is subject to change without notice. 5. Actual suite area may vary from the stated area. Drawings are not to scale. The Developer reserves the right to make any revisions whatsoever including for aesthetic purposes.

6. Calculation of suite area is measured as the area bounded by the centre line of demising or partition walls separating one unit from another unit, the exterior face of all exterior walls, and the exterior face of the corridor wall enclosing the adjoining unit. 7. Calculation of balcony area is measured as the area bounded by the centre line of demising or partition walls separating one unit from another unit, the outmost face of the enclosing guard and the external face of the adjoining balcony. 8. The units are measured at typical floor in the building. Columns may vary in size depending on the floor level. 9. For each unit type, unit sizes and details might be different and your sales and purchase agreement will contain the actual size of each specific unit.

30TH FLOOR TYPICAL FLOOR PLAN



Disclaimer: 1. All stated dimensions and services whether in relation to the building, common areas or individual units are subject to government and local authority approvals. Final dimensions and services will be stated in your sales and purchase agreement 2. All room dimensions are measured to structural elements and exclude wall finishes and construction tolerances. 3. All dimensions have been provided by our consultant architects. 4. All materials, dimensions and drawings are approximate. Information is subject to change without notice. 5. Actual suite area may vary from the stated area. Drawings are not to scale. The Developer reserves the right to make any revisions whatsoever including for aesthetic purposes.

6. Calculation of suite area is measured as the area bounded by the centre line of demising or partition walls separating one unit from another unit, the exterior face of all exterior walls, and the exterior face of the corridor wall enclosing the adjoining unit. 7. Calculation of balcony area is measured as the area bounded by the centre line of demising or partition walls separating one unit from another unit, the outmost face of the enclosing guard and the external face of the adjoining balcony. 8. The units are measured at typical floor in the building. Columns may vary in size depending on the floor level. 9. For each unit type, unit sizes and details might be different and your sales and purchase agreement will contain the actual size of each specific unit.

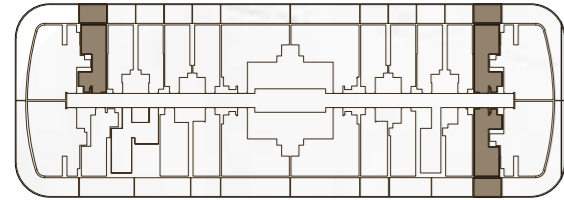
Crafted for a Life at the Forefront

Skyhall is a testament to Binghatti's unwavering commitment to quality and craftsmanship. Each residence is designed to inspire and empower, providing the perfect foundation for a life lived at the forefront.



STUDIO

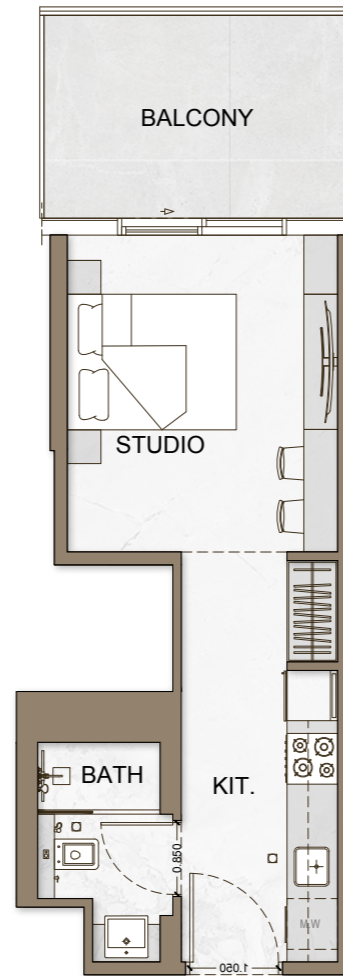
TYPE - 1



AREA	SQ.M	SQ.FT
SUITE AREA	27.79 m ²	299 ft ²
BALCONY AREA	9.00 m ²	97 ft ²
TOTAL UNIT AREA	36.79 m ²	396 ft ²

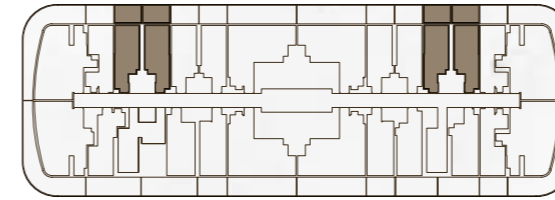
FLAT DESIGN COMPONENTS

BATH	4 m ²
STUDIO	14 m ²
KITCHEN	7 m ²



STUDIO

TYPE - 2



AREA	SQ.M	SQ.FT
SUITE AREA	27.71 m ²	298 ft ²
BALCONY AREA	9.01 m ²	97 ft ²
TOTAL UNIT AREA	36.72 m ²	395 ft ²

FLAT DESIGN COMPONENTS

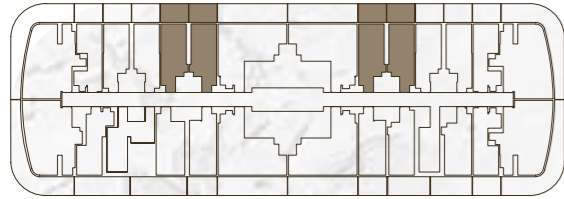
MASTER BATH	3 m ²
MASTER BEDROOM	14 m ²
LIVING & DINING	7 m ²



FLOOR PLAN

STUDIO

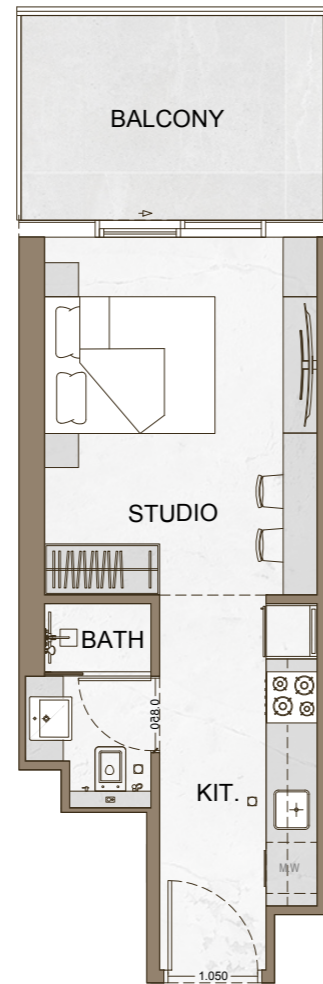
TYPE - 3



AREA	SQ.M	SQ.FT
SUITE AREA	27.92 m ²	301 ft ²
BALCONY AREA	9.00 m ²	97 ft ²
TOTAL UNIT AREA	36.92 m ²	397 ft ²

FLAT DESIGN COMPONENTS

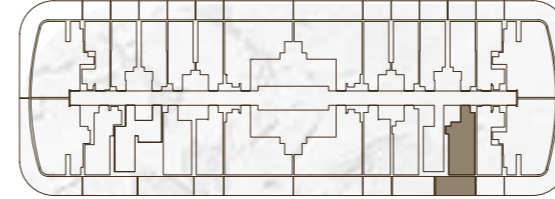
BATH	3 m ²
STUDIO	13 m ²
KITCHEN	8 m ²



FLOOR PLAN

STUDIO

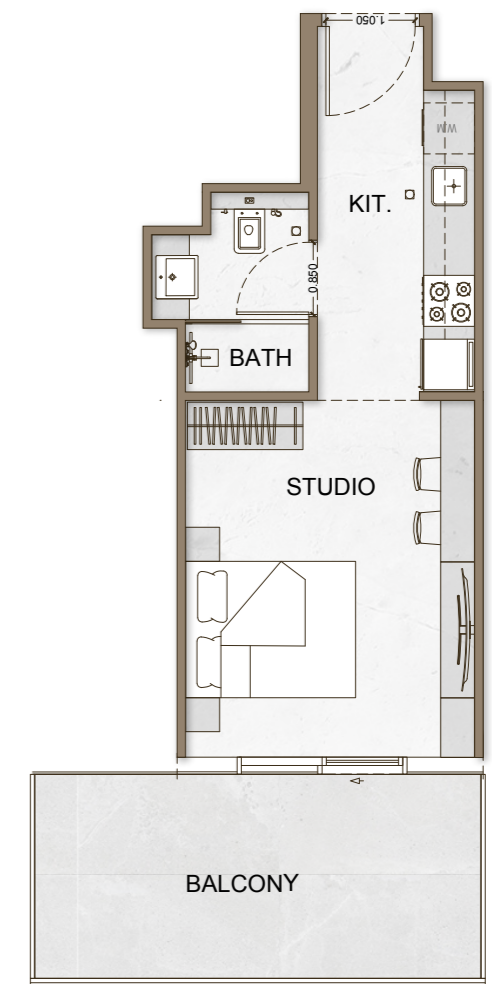
TYPE - 4



AREA	SQ.M	SQ.FT
SUITE AREA	29.69 m ²	320 ft ²
BALCONY AREA	13.78 m ²	148 ft ²
TOTAL UNIT AREA	43.47 m ²	468 ft ²

FLAT DESIGN COMPONENTS

MASTER BATH	4 m ²
MASTER BEDROOM	14 m ²
LIVING & DINING	8 m ²

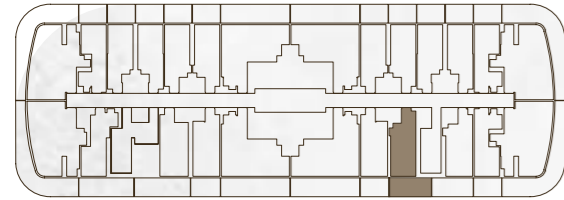


Disclaimer: 1. All stated dimensions and services whether in relation to the building, common areas or individual units are subject to government and local authority approvals. Final dimensions and services will be stated in your sales and purchase agreement 2. All room dimensions are measured to structural elements and exclude wall finishes and construction tolerances. 3. All dimensions have been provided by our consultant architects. 4. All materials, dimensions and drawings are approximate. Information is subject to change without notice. 5. Actual suite area may vary from the stated area. Drawings are not to scale. The Developer reserves the right to make any revisions whatsoever including for aesthetic purposes.

6. Calculation of suite area is measured as the area bounded by the centre line of demising or partition walls separating one unit from another unit, the exterior face of all exterior walls, and the exterior face of the corridor wall enclosing the adjoining unit. 7. Calculation of balcony area is measured as the area bounded by the centre line of demising or partition walls separating one unit from another unit, the outmost face of the enclosing guard and the external face of the adjoining balcony. 8. The units are measured at typical floor in the building. Columns may vary in size depending on the floor level. 9. For each unit type, unit sizes and details might be different and your sales and purchase agreement will contain the actual size of each specific unit.

STUDIO

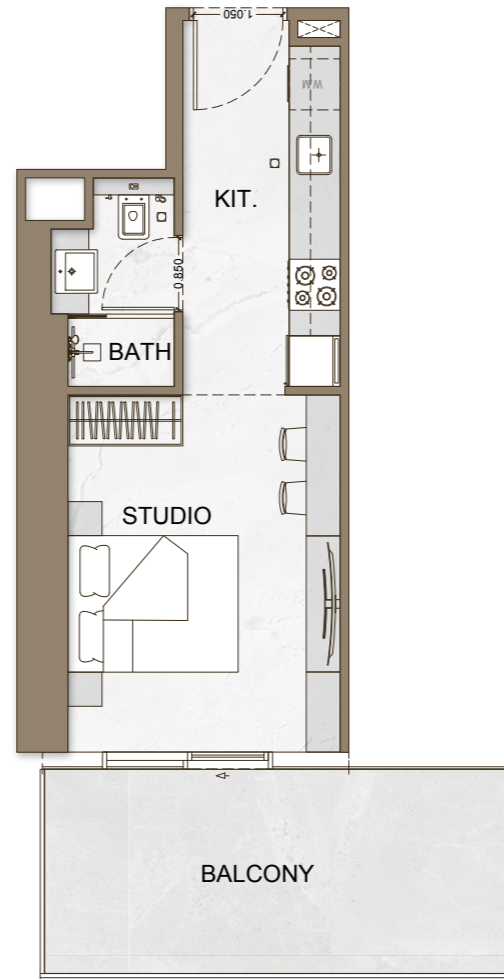
TYPE - 5



AREA	SQ.M	SQ.FT
SUITE AREA	29.64 m ²	319 ft ²
BALCONY AREA	14.24 m ²	153 ft ²
TOTAL UNIT AREA	43.88 m ²	472 ft ²

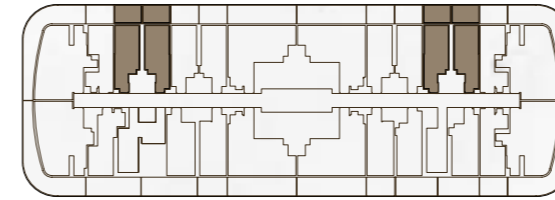
FLAT DESIGN COMPONENTS

BATH	3 m ²
STUDIO	13 m ²
KITCHEN	8 m ²



STUDIO

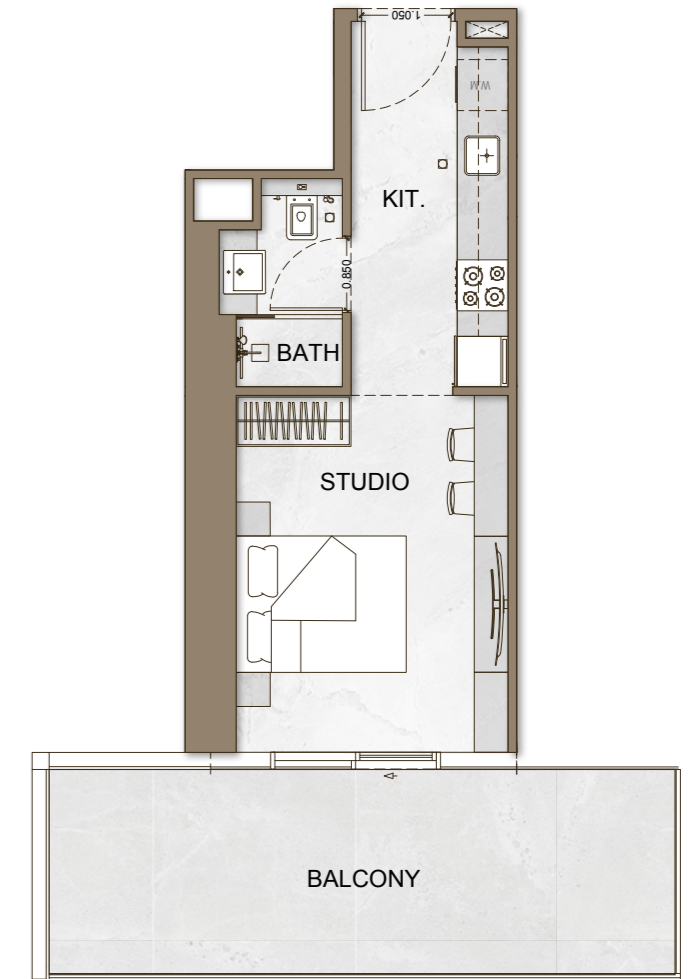
TYPE - 6



AREA	SQ.M	SQ.FT
SUITE AREA	27.71 m ²	298 ft ²
BALCONY AREA	9.01 m ²	97 ft ²
TOTAL UNIT AREA	36.72 m ²	395 ft ²

FLAT DESIGN COMPONENTS

MASTER BATH	4 m ²
MASTER BEDROOM	14 m ²
LIVING & DINING	7 m ²



A Canvas of Possibilities

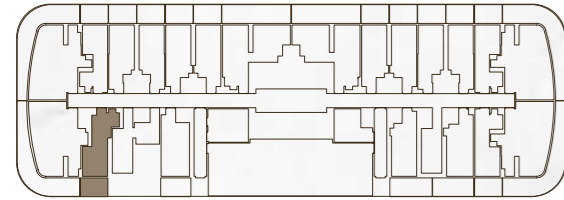
Skyhall's interiors are a composite of refined elegance. A carefully curated palette of subtle hues and rich textures creates an atmosphere of understated luxury, allowing your personal style to shine.



FLOOR PLAN

STUDIO

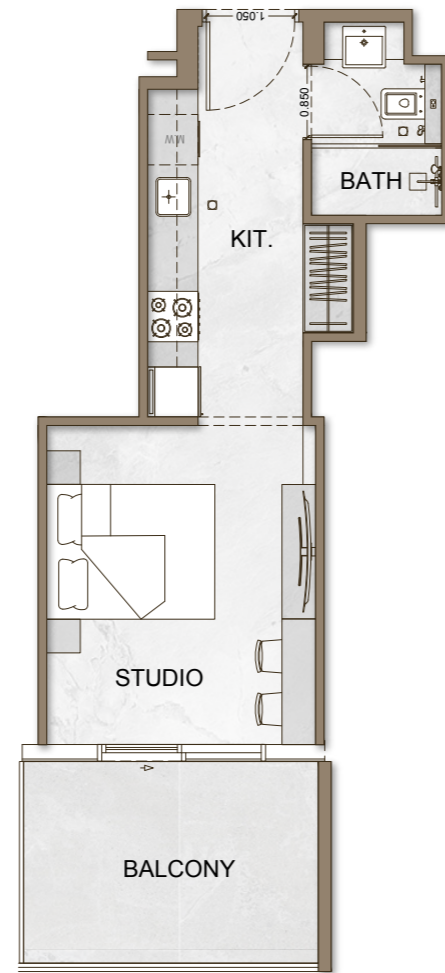
TYPE - 7



AREA	SQ.M	SQ.FT
SUITE AREA	28.88 m ²	311 ft ²
BALCONY AREA	9.04 m ²	97 ft ²
TOTAL UNIT AREA	37.92 m ²	408 ft ²

FLAT DESIGN COMPONENTS

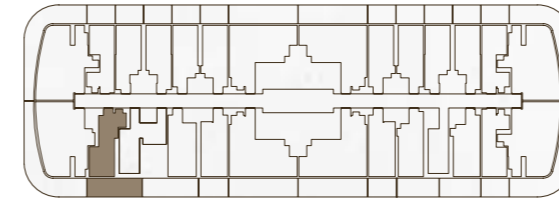
BATH	3 m ²
STUDIO	12 m ²
KITCHEN	9 m ²



FLOOR PLAN

STUDIO

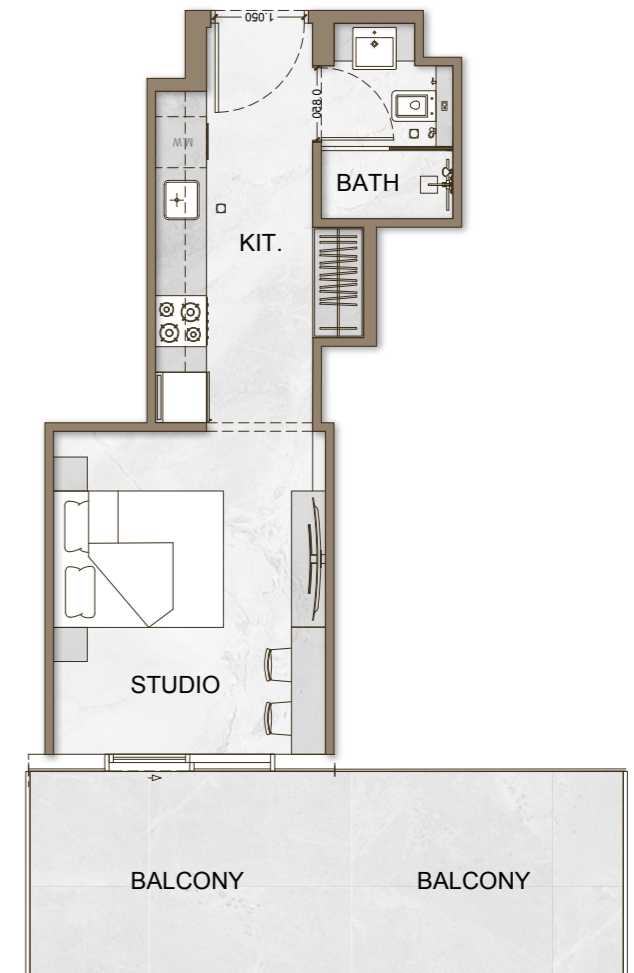
TYPE - 8



AREA	SQ.M	SQ.FT
SUITE AREA	28.88 m ²	311 ft ²
BALCONY AREA	17.46 m ²	188 ft ²
TOTAL UNIT AREA	46.34 m ²	499 ft ²

FLAT DESIGN COMPONENTS

MASTER BATH	3 m ²
MASTER BEDROOM	12 m ²
LIVING & DINING	9 m ²

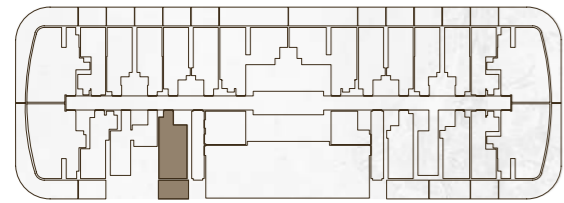


Disclaimer: 1. All stated dimensions and services whether in relation to the building, common areas or individual units are subject to government and local authority approvals. Final dimensions and services will be stated in your sales and purchase agreement 2. All room dimensions are measured to structural elements and exclude wall finishes and construction tolerances. 3. All dimensions have been provided by our consultant architects. 4. All materials, dimensions and drawings are approximate. Information is subject to change without notice. 5. Actual suite area may vary from the stated area. Drawings are not to scale. The Developer reserves the right to make any revisions whatsoever including for aesthetic purposes.

6. Calculation of suite area is measured as the area bounded by the centre line of demising or partition walls separating one unit from another unit, the exterior face of all exterior walls, and the exterior face of the corridor wall enclosing the adjoining unit. 7. Calculation of balcony area is measured as the area bounded by the centre line of demising or partition walls separating one unit from another unit, the outmost face of the enclosing guard and the external face of the adjoining balcony. 8. The units are measured at typical floor in the building. Columns may vary in size depending on the floor level. 9. For each unit type, unit sizes and details might be different and your sales and purchase agreement will contain the actual size of each specific unit.

STUDIO

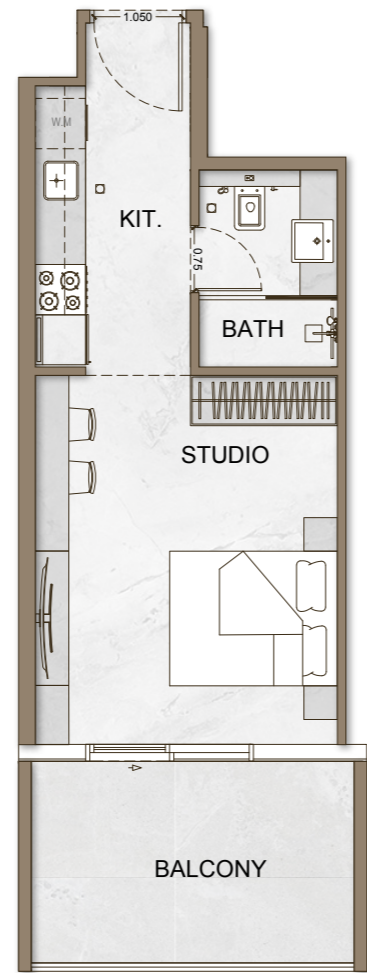
TYPE - 9



AREA	SQ.M	SQ.FT
SUITE AREA	31.61 m ²	340 ft ²
BALCONY AREA	10.00 m ²	108 ft ²
TOTAL UNIT AREA	41.61 m ²	448 ft ²

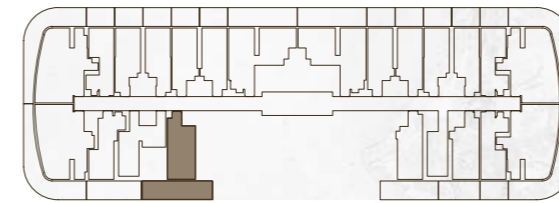
FLAT DESIGN COMPONENTS

BATH	4 m ²
STUDIO	16 m ²
KITCHEN	7 m ²



STUDIO

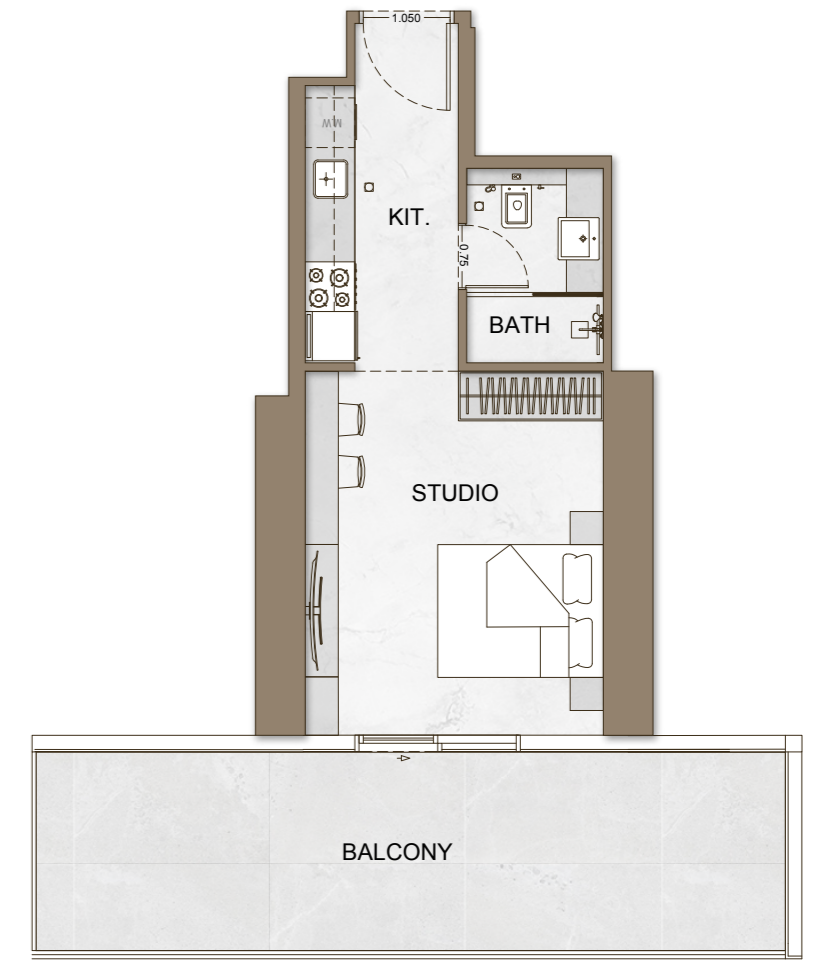
TYPE - 10



AREA	SQ.M	SQ.FT
SUITE AREA	31.61 m ²	340 ft ²
BALCONY AREA	22.55 m ²	243 ft ²
TOTAL UNIT AREA	54.16 m ²	583 ft ²

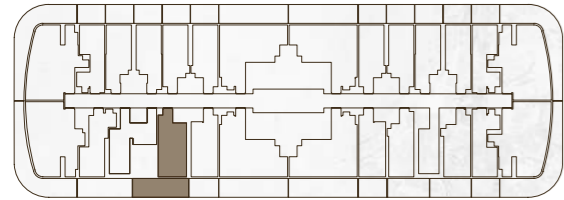
FLAT DESIGN COMPONENTS

MASTER BATH	4 m ²
MASTER BEDROOM	16 m ²
LIVING & DINING	7 m ²



STUDIO

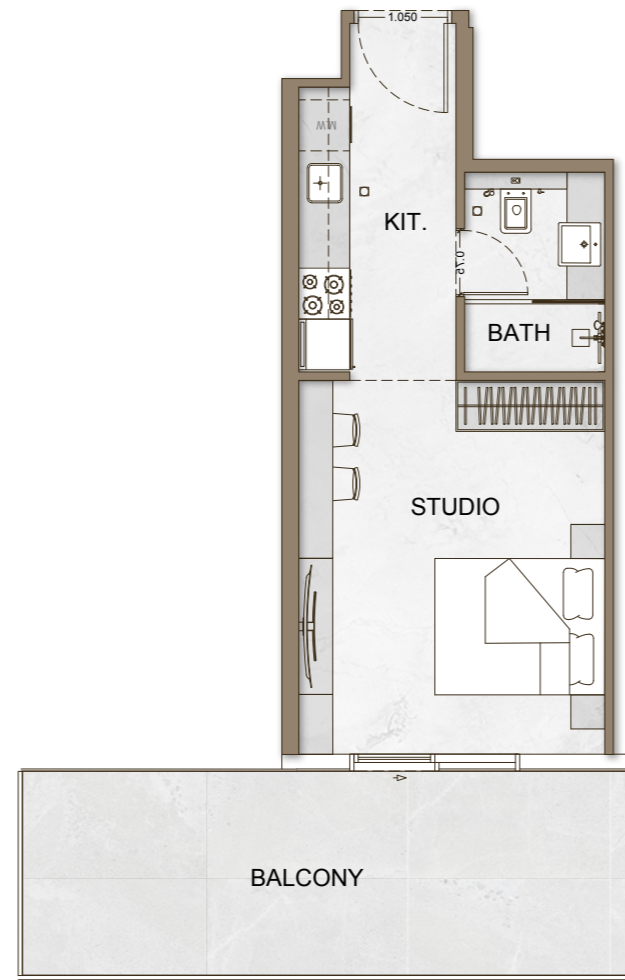
TYPE - 11



AREA	SQ.M	SQ.FT
SUITE AREA	31.61 m ²	340 ft ²
BALCONY AREA	18.97 m ²	204 ft ²
TOTAL UNIT AREA	50.58 m ²	544 ft ²

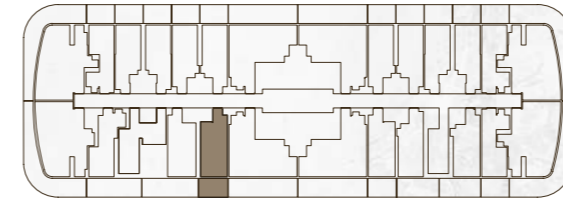
FLAT DESIGN COMPONENTS

BATH	4 m ²
STUDIO	16 m ²
KITCHEN	7 m ²



STUDIO

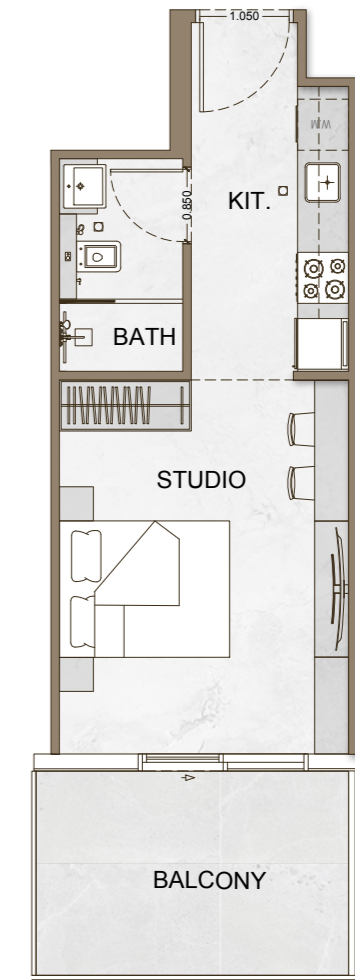
TYPE - 12



AREA	SQ.M	SQ.FT
SUITE AREA	29.49 m ²	317 ft ²
BALCONY AREA	9.50 m ²	102 ft ²
TOTAL UNIT AREA	38.99 m ²	420 ft ²

FLAT DESIGN COMPONENTS

MASTER BATH	4 m ²
MASTER BEDROOM	15 m ²
LIVING & DINING	7 m ²



Live Within a Vision

Skyhall is more than just a place to live; it's a place to embody your aspirations. Embrace a life of unparalleled comfort and convenience, where every detail is designed to inspire and empower.



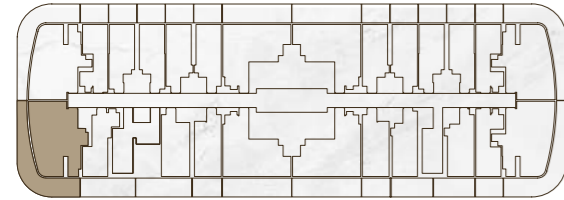
Where Aspirations Meet Ascendantly

To those who seek more. To those who dare
above and beyond. To all of them - exist
within a vision.



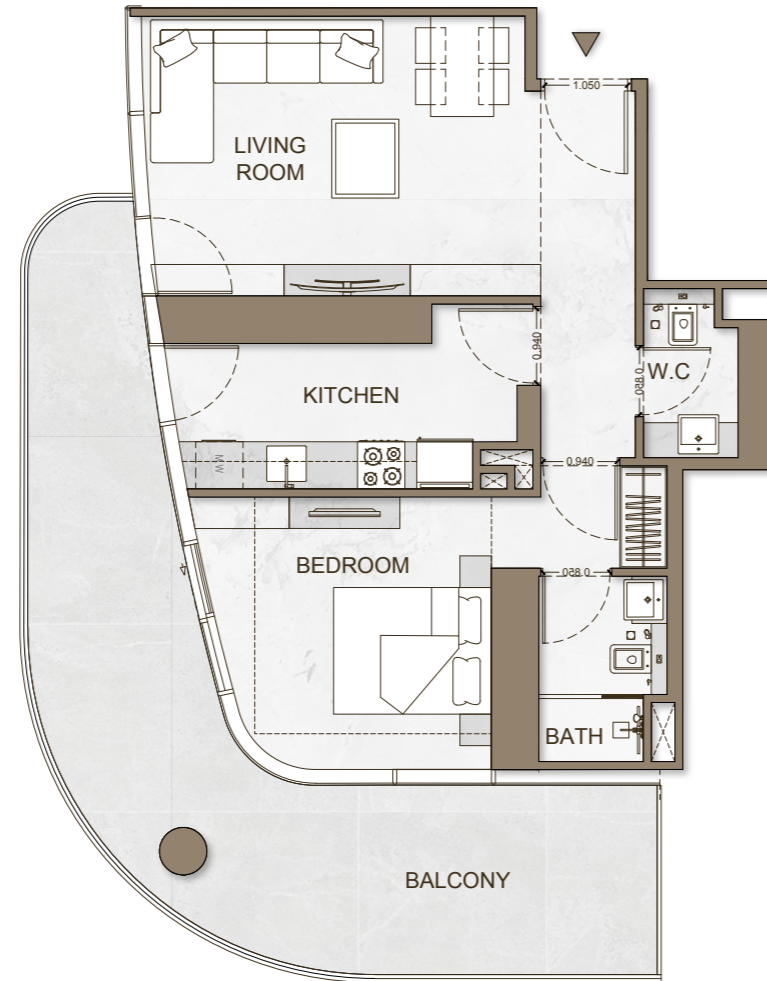
1 BEDROOM

TYPE - 1



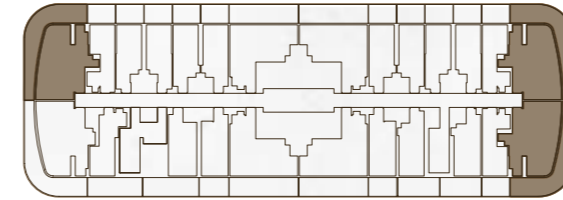
AREA	SQ.M	SQ.FT
SUITE AREA	60.98 m ²	656 ft ²
BALCONY AREA	31.41 m ²	339 ft ²
TOTAL UNIT AREA	92.30 m ²	994 ft ²

FLAT DESIGN COMPONENTS		
MASTER BATH		4 m ²
MASTER BEDROOM		15 m ²
LIVING & DINING		18 m ²
KITCHEN		9 m ²
W.C		3 m ²
CORRIDOR		6 m ²



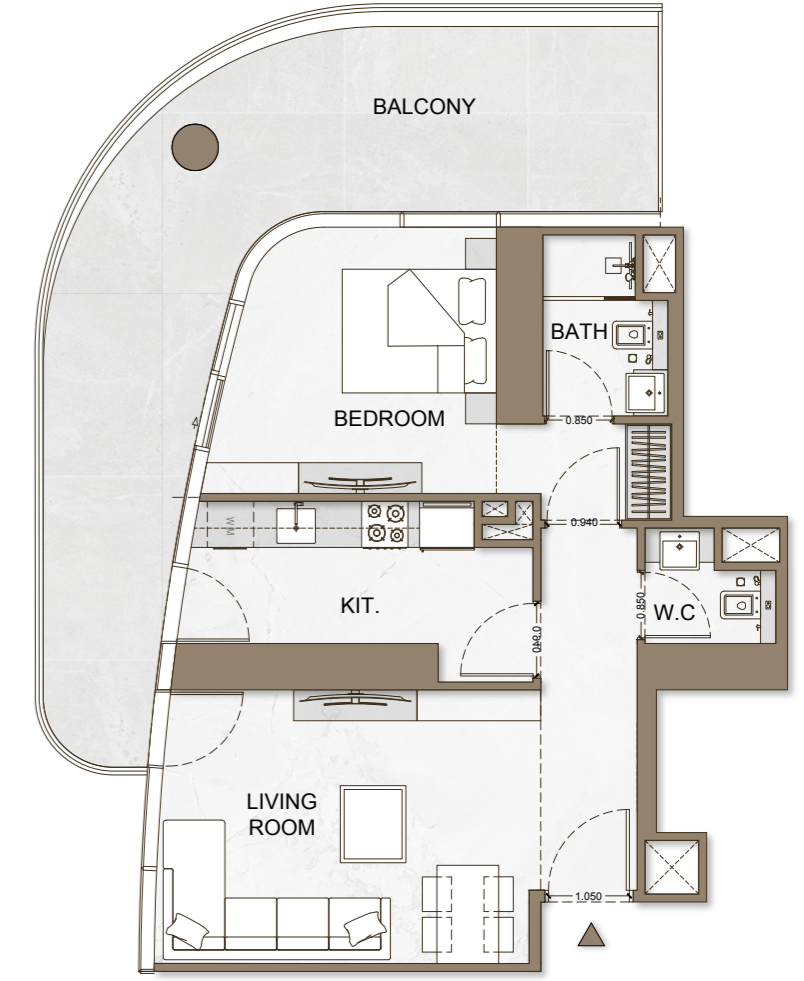
1 BEDROOM

TYPE - 2



AREA	SQ.M	SQ.FT
SUITE AREA	60.78 m ²	654 ft ²
BALCONY AREA	31.41 m ²	338 ft ²
TOTAL UNIT AREA	92.19 m ²	992 ft ²

FLAT DESIGN COMPONENTS		
MASTER BATH		4 m ²
MASTER BEDROOM		15 m ²
LIVING & DINING		17 m ²
KITCHEN		9 m ²
W.C		2 m ²
CORRIDOR		6 m ²

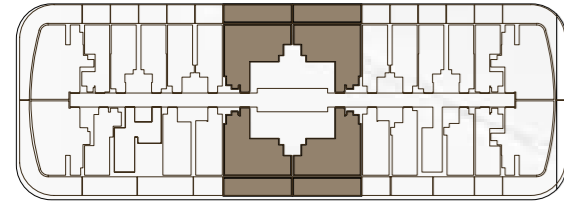


Disclaimer: 1. All stated dimensions and services whether in relation to the building, common areas or individual units are subject to government and local authority approvals. Final dimensions and services will be stated in your sales and purchase agreement 2. All room dimensions are measured to structural elements and exclude wall finishes and construction tolerances. 3. All dimensions have been provided by our consultant architects. 4. All materials, dimensions and drawings are approximate. Information is subject to change without notice. 5. Actual suite area may vary from the stated area. Drawings are not to scale. The Developer reserves the right to make any revisions whatsoever including for aesthetic purposes.

6. Calculation of suite area is measured as the area bounded by the centre line of demising or partition walls separating one unit from another unit, the exterior face of all exterior walls, and the exterior face of the corridor wall enclosing the adjoining unit. 7. Calculation of balcony area is measured as the area bounded by the centre line of demising or partition walls separating one unit from another unit, the outmost face of the enclosing guard and the external face of the adjoining balcony. 8. The units are measured at typical floor in the building. Columns may vary in size depending on the floor level. 9. For each unit type, unit sizes and details might be different and your sales and purchase agreement will contain the actual size of each specific unit.

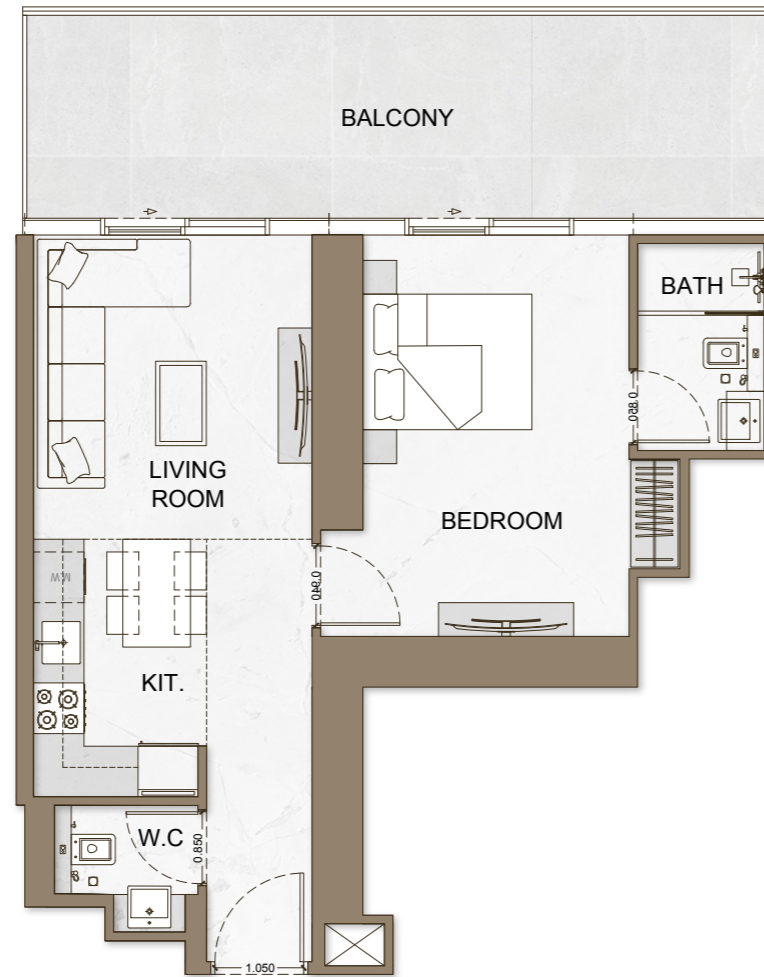
1 BEDROOM

TYPE - 3



AREA	SQ.M	SQ.FT
SUITE AREA	54.22 m ²	584 ft ²
BALCONY AREA	22.46 m ²	242 ft ²
TOTAL UNIT AREA	76.68 m ²	825 ft ²

FLAT DESIGN COMPONENTS	
MASTER BATH	4 m ²
MASTER BEDROOM	16 m ²
LIVING & DINING	12 m ²
KITCHEN	6 m ²
W.C	2 m ²
CORRIDOR	6 m ²



Disclaimer: 1. All stated dimensions and services whether in relation to the building, common areas or individual units are subject to government and local authority approvals. Final dimensions and services will be stated in your sales and purchase agreement 2. All room dimensions are measured to structural elements and exclude wall finishes and construction tolerances. 3. All dimensions have been provided by our consultant architects. 4. All materials, dimensions and drawings are approximate. Information is subject to change without notice. 5. Actual suite area may vary from the stated area. Drawings are not to scale. The Developer reserves the right to make any revisions whatsoever including for aesthetic purposes.

6. Calculation of suite area is measured as the area bounded by the centre line of demising or partition walls separating one unit from another unit, the exterior face of all exterior walls, and the exterior face of the corridor wall enclosing the adjoining unit. 7. Calculation of balcony area is measured as the area bounded by the centre line of demising or partition walls separating one unit from another unit, the outmost face of the enclosing guard and the external face of the adjoining balcony. 8. The units are measured at typical floor in the building. Columns may vary in size depending on the floor level. 9. For each unit type, unit sizes and details might be different and your sales and purchase agreement will contain the actual size of each specific unit.



Discover a range of thoughtfully designed retail floor plans to meet the unique needs of your business. From boutique spaces to larger storefronts, Skyhall offers a space for every discerning retailer.

Retail Floor Plans

RETAIL UNIT 01



RETAIL UNIT 02



RETAIL UNIT 03



RETAIL UNIT 04



RETAIL UNIT 05



RETAIL UNIT 06



RETAIL UNIT 07



RETAIL UNIT 08



RETAIL UNIT 09



RETAIL UNIT 10



RETAIL UNIT 11



